

Church House

Third Sector: The Conference

Stephanie Maurel - CEO, The Corporation of the Church House

Alex Scott-Whitby - Director, ScottWhitbyStudio

Scott Whitby Studio



Church House Opens
in **June 1940** and
during the war hosts
both the house of
commons & lords



The building hosts
several key events in
social and political
history, such as
the pretext to the
Nuremberg Trials



**Defensive and
unwelcoming** - the
building facade turns
its back to the street



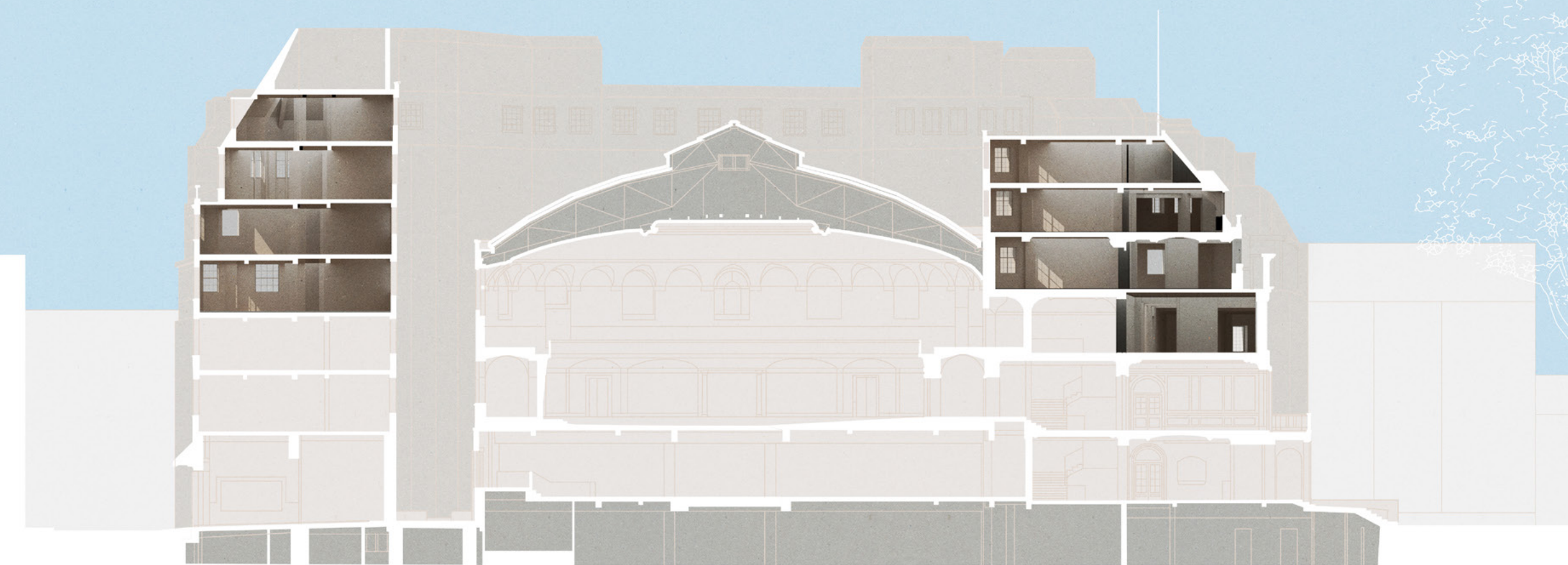
Decades of piecemeal
interventions and
insensitive, ad-hoc
additions to the
building



The building sits
on the line of the
**UNESCO World
Heritage Site**



The big-picture:
Taking a **holistic
approach** to the
building



Activating facades
to engage with the
street and **open up**
the building to the
local community



Original features
were discovered
and have now been
carefully restored



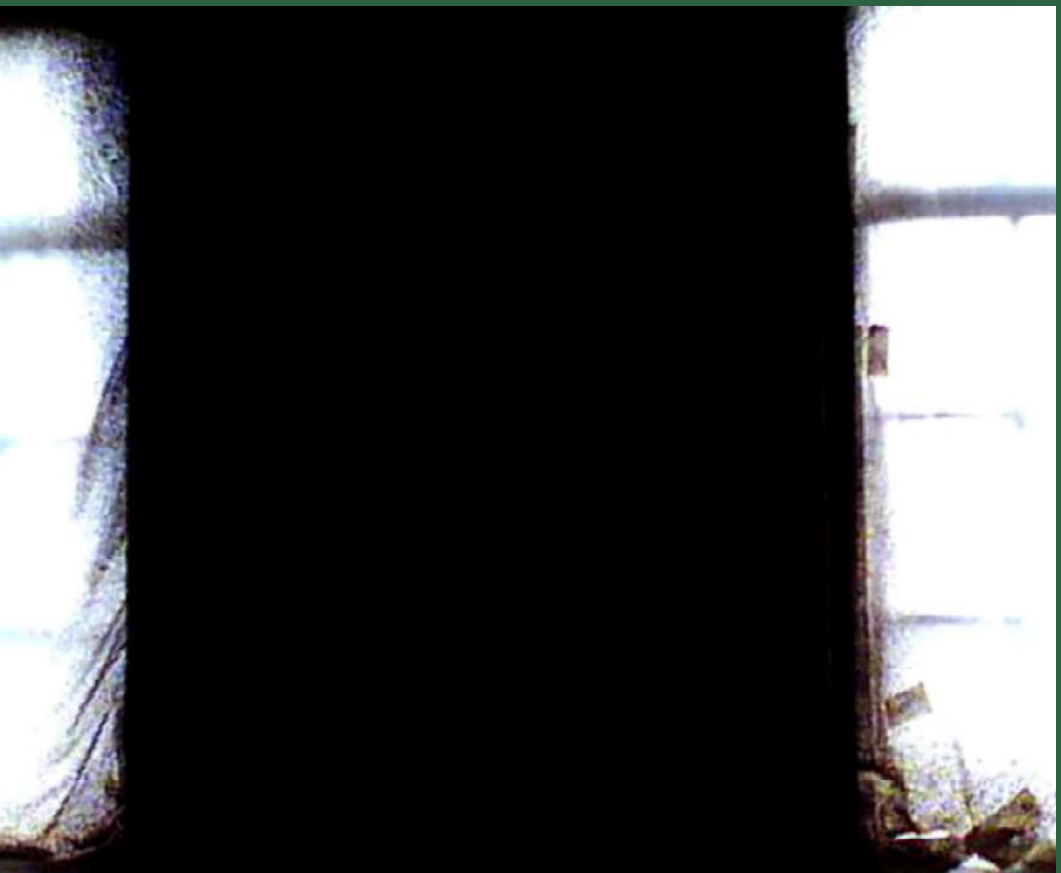
Insulating a 1930s
Grade II Listed
Building with
SprayCork



Testing Thermal Performance



Existing Wall



Cork Sprayed Wall



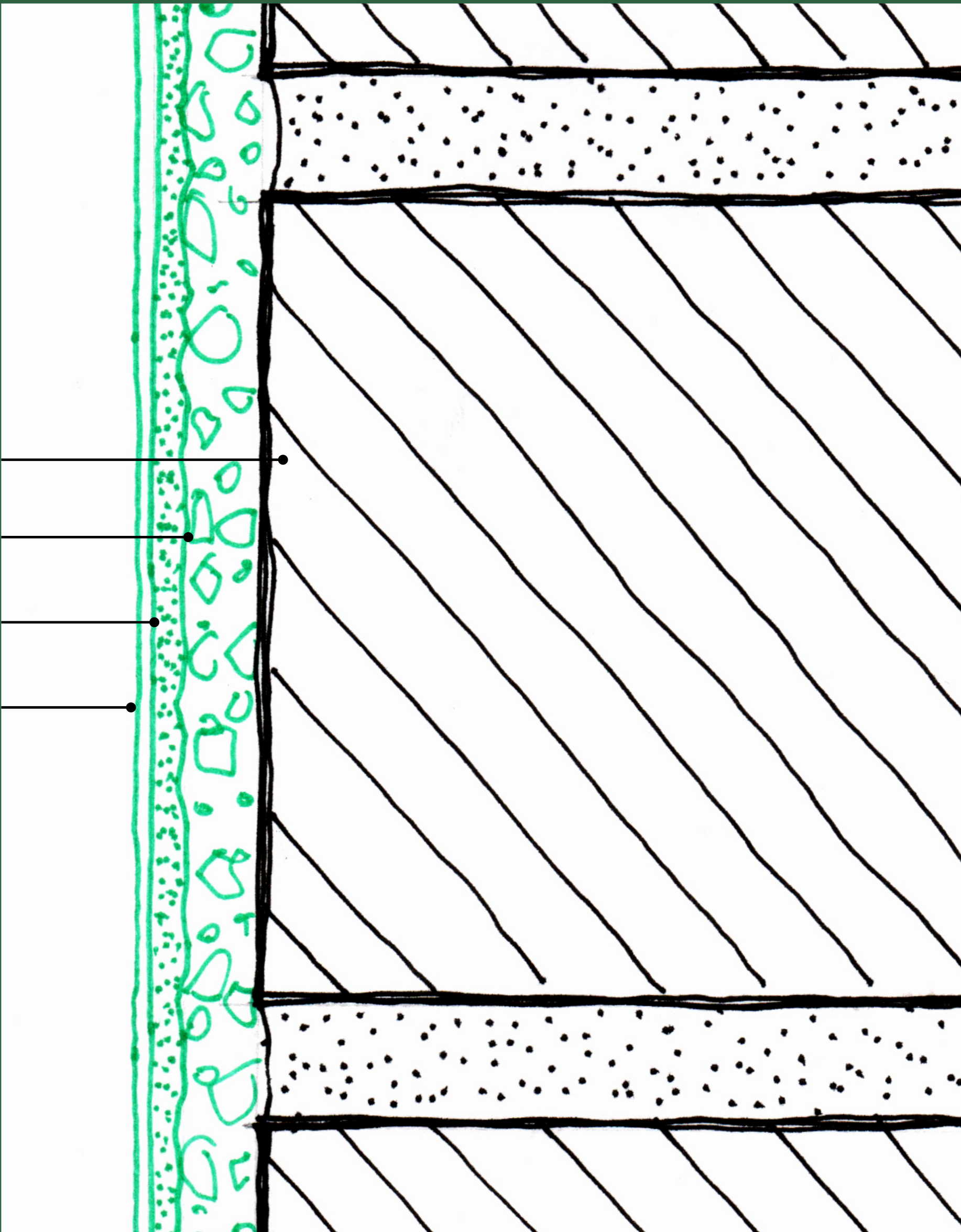
Sketch of New Wall Build-Up

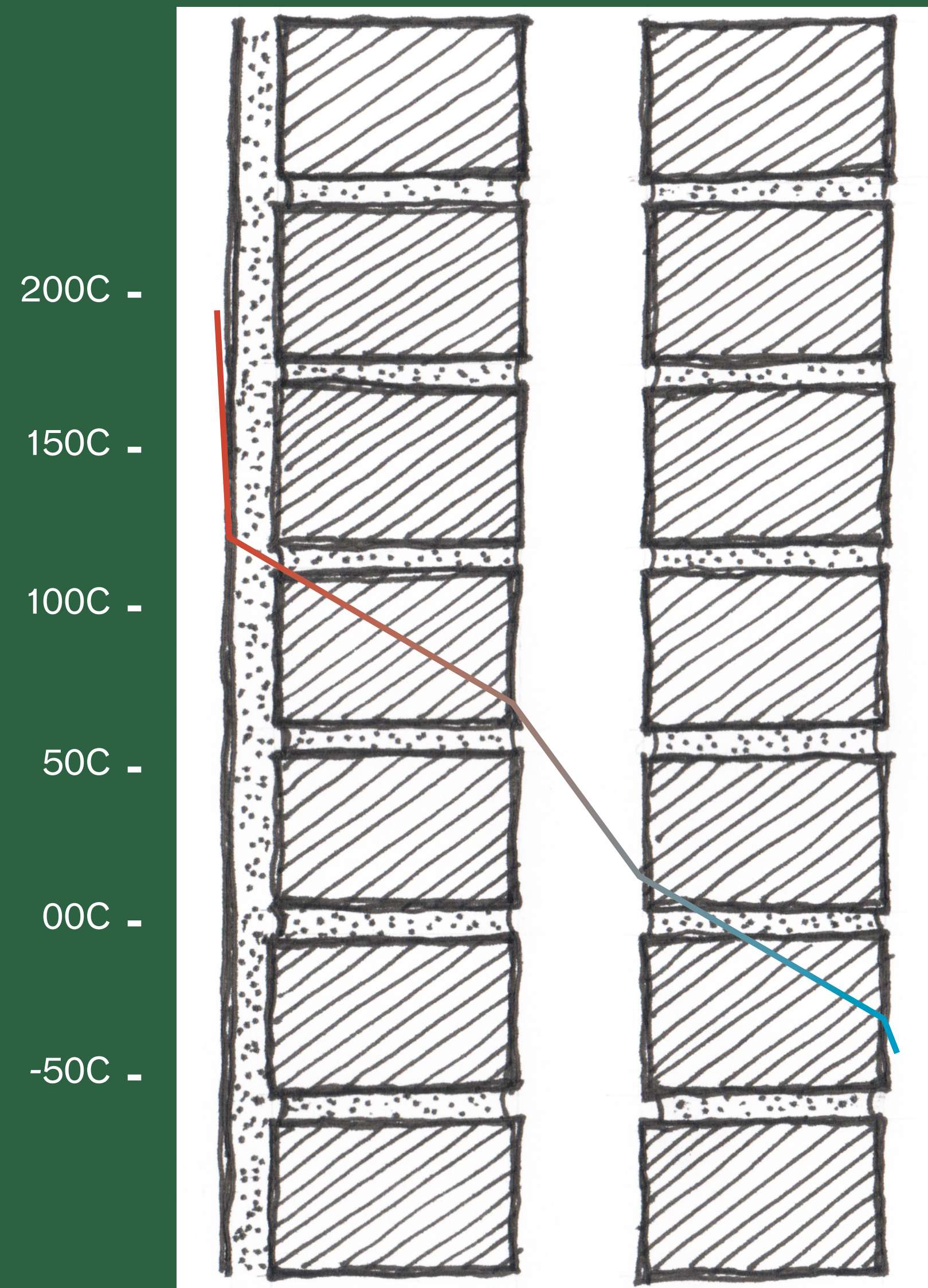
Existing masonry wall, with plaster removed

Spray-cork render

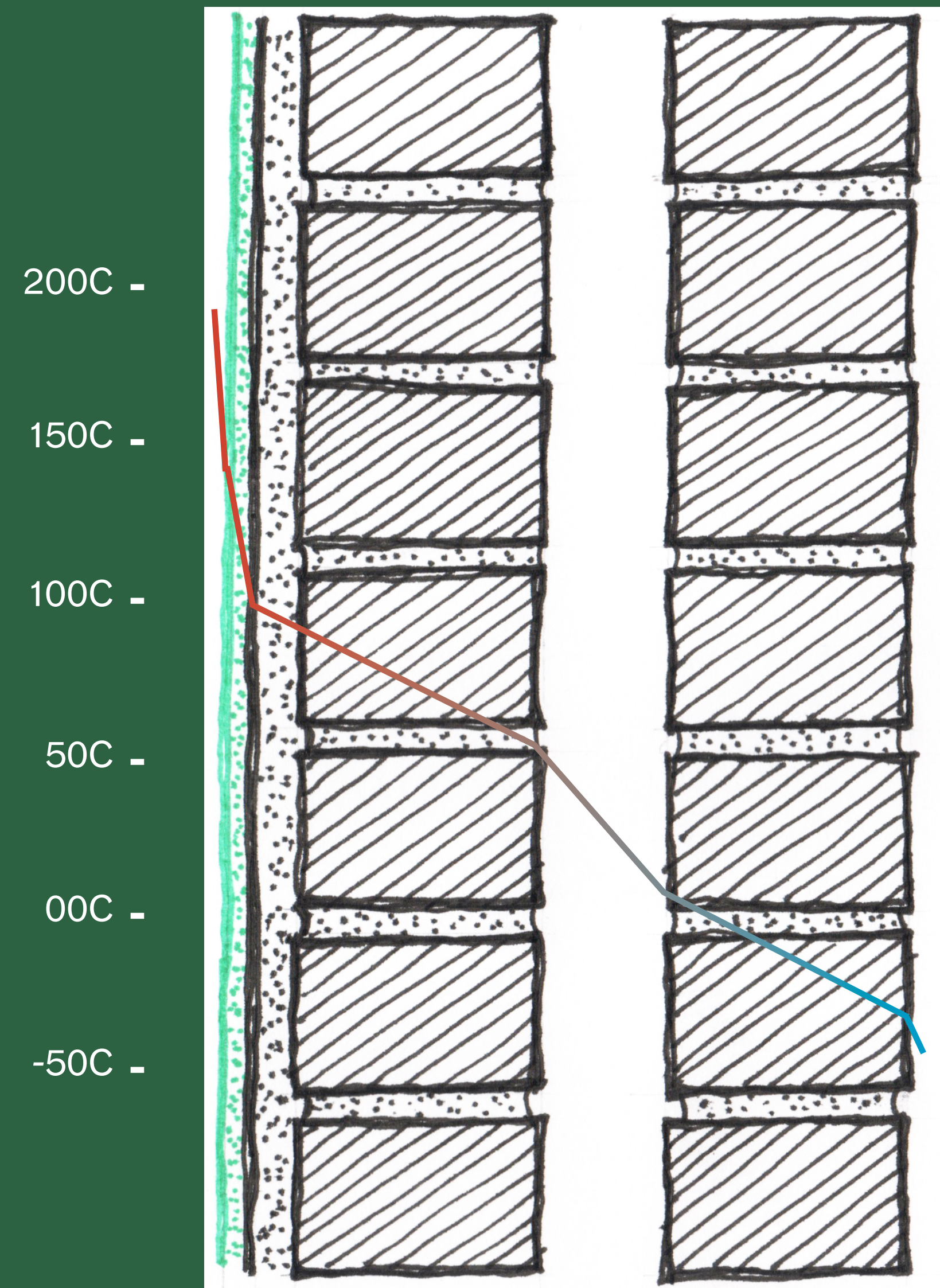
Lime plaster

Graphene + Lime paint





Sketch diagram showing heat loss through an existing wall.



The same wall with the new wall build-up

The refurbishment
project at
Church House
has Sequestered
up to **1,260t CO₂e**
through material
specification



This equates to
60%
of the CO₂ emissions
of Church House
Westminster, Lam-
beth Palace & Bish-
opthorpe Palace in
2021



Or equal to
1,067
return flights from
London to New York



Over 6,000sqm
of Cork Flooring has
been installed, Se-
questering over
1,000t CO₂e



Over 1,100kg
of Granulated Cork
has been used in
SprayCork applied
across the building,
sequestering over
80t CO₂e



The use of Graphen-
stone Paint has cre-
ated a CO₂e saving of
6.96t
vs an industry stan-
dard alternative



Reception feature
walls are made from
**100% Recycled and
Recyclable Plastic**

Natural Clay Plasters
have **Low Embodied
Carbon**, are non-tox-
ic, inert and low VOC
emissions



Carbon Positive

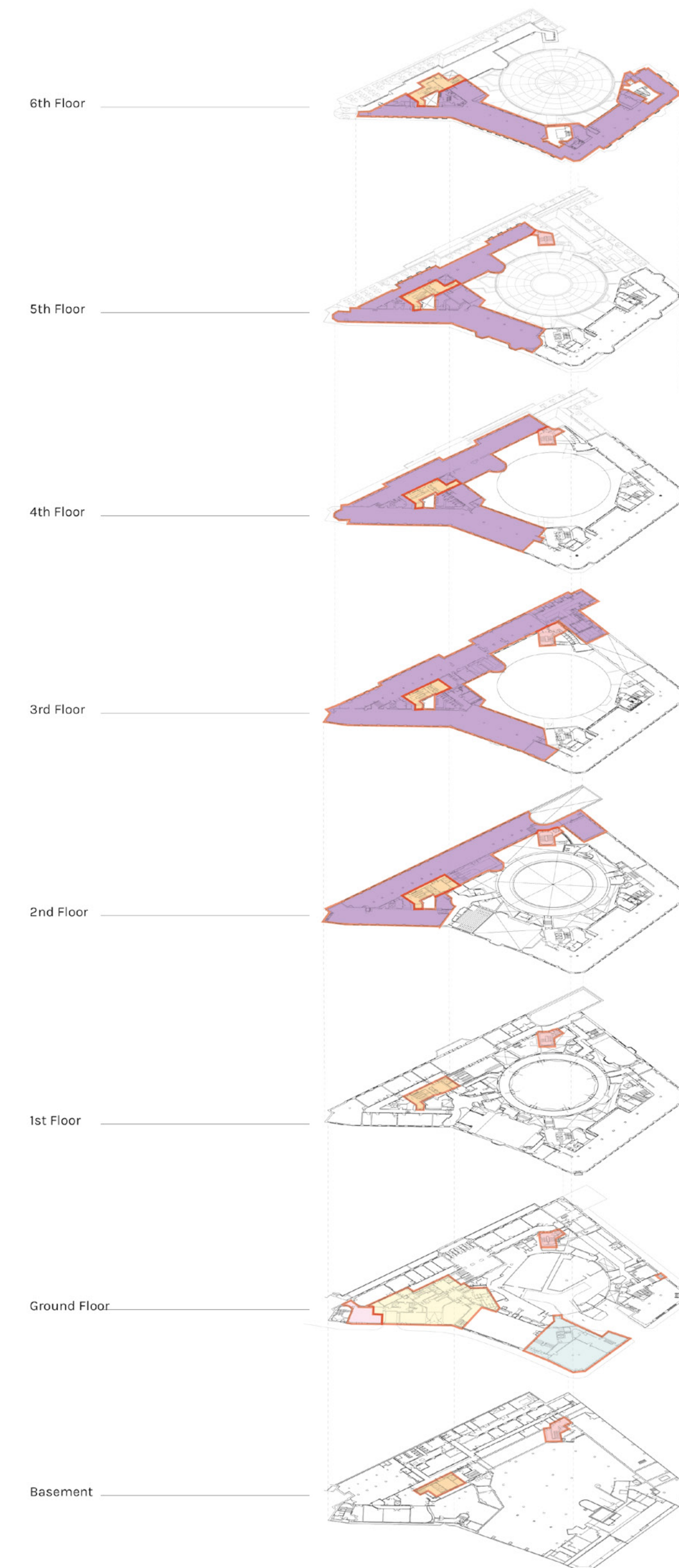
Terrazzo flooring
uses a bio-polymer
binding agent, is
Zero waste and
100% Recyclable



New LED lighting increases efficiency and the products are **93% Recyclable & Manufactured with 100% Green Energy**



A multi-year, multi-
phased approach
to enable tenant
retention



Church House

Third Sector: The Conference

Stephanie Maurel - CEO, The Corporation of the Church House

Alex Scott-Whitby - Director, ScottWhitbyStudio

Thank You

Scott Whitby Studio

